

About my work

My painting process is the multi-layering of three mediums on untreated cotton & paper. On cotton I apply a colorfast dye, acrylic paint and color pencil. On paper it is soft pastel, acrylic paint and color pencil. The works on canvas are usually wrapped around a thin wood panel or on traditional stretcher frames. On paper the work is framed with glass.

The multi-layering, multi-medium process is similar to an individual's physical, emotional, intellectual and spiritual development over time.

Resonance and sympathetic relationships form vibrational patterns through which colors, shapes, and sounds commune. These exist equally in painting and music. This phenomenon, first intuited in my youth, now has scientific support. It is the source of my creative inspiration.

It seems to me, in contemporary society that we have relegated the Arts to surface embellishment and entertainment. In reality, its place should be an integral part of our intellectual, emotional and spiritual development. Science has distorted our reasoning into classes of either/ors. Art's purpose is to bypass the scientific mind which is limited to the finite. The Arts lead us to the heart's intelligence where perceptions are infinite, beyond either/ors, towards unification.

On Vimeo, YouTube, FaceBook, and other sites you will find examples of the union of colors, shapes and sounds called "pictumsonus".

Over 800 paintings, drawings and designs included in public, private and corporate collections throughout the world.



50" x 50" "Muladhara" 2004

The first of a suite of 7 paintings

CONTACT INFORMATION

rpyb@windstream.net

www.raypierotti.com

www.vimeo.com/user20736155

229 679-5069



40" x 36" "Diminished Sevenths" 2010

One of 5 paintings dealing with musical intervals

brochure designed by R. Pierotti

RAY PIEROTTI

artist/composer



192" x 96" "The Way of Life" 2006-07

mixed mediums on untreated cotton canvas

The 21st painting from a series called separate realities started in the 1960s



12" x 87" x 2" (ea.)

"Feminine & Masculine Psyche"

2011

mixed mediums on untreated cotton/ wood

CDs & DVDs with related musical compositions and images are created for most paintings, please inquire.

"Overlapping Sensibilities"

Personal Voice



Emotional Ebb

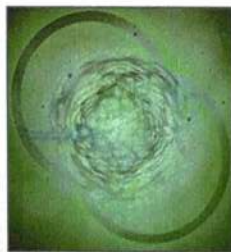


mixed on paper
ea. 44" square
7 in Suite
2012

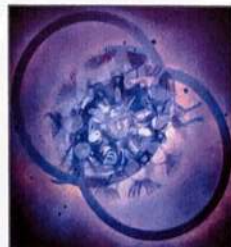
mixed on canvas
ea. 36" square
7 in Suite
A dvd of this
Suite is available
by request
2007-09

"Gateways to the Divine"

i Love



Thru heart
i See



Thru intuition

Transition Suite #3

From Mind to Heart



mixed on paper
ea. 30" x 40"
5 in Suite
2008

Additional paintings & drawings of a similar character can be viewed on my web site: www.raypierotti.com or on

www.vimeo.com/user20736155 & www.youtube.com/user/raypierotti

Ray Pierotti
artist/composer
P.O. Box 179
Shellman, GA 39886
rpyb@windstream.net
www.raypierotti.com

"There is a geometry to art as there is a geometry to life, and as the
Greeks guessed, they happen to be the same"
Matila Ghyka

The general public's attitude about Art is inclined to relegated the Arts to the category of entertainment or at best to a form of decorative embellishment. I believe Arts extrinsic value to be central to our intellectual, emotional and spiritual development and general well-being throughout our entire life. Scientific intelligence (apart from quantum mechanics) limits our thinking in either/or, true/false, black/white etc. patterns. The Arts by contrast, take us to the heart's intelligence where perceptions are broader, beyond either/ors. This intelligence helps us move towards a personal unity. The Arts ask that we used both sides of our dualistic brain. This is central to our health and essential to our wholeness.

I was born and socially educated into a multi-disciplinary milieu. Public schools in Utah, military service in Japan and Korea, Mormon missionary work in France, Belgium and Switzerland, undergraduate degrees from La Sorbonne and the University of Utah. Eventually a graduate degree from the University of Utah gave form to my intellectual and artistic development. Museums, concert halls, theaters, movies and sidewalk cafes gave shape to my spirit, emotions and imagination. Skiing, tennis and manual labor kept me physically grounded.

The following quote from the Chinese poet, Loatzu best describes my artistic mind set, ***"...whether a man dispassionately sees to the core of life or passionately sees the surface, the core and the surface are essentially the same, words making them seem different only to express appearance. If name be needed, call it wonder. From wonder into wonder existence opens."*** Over time my approach to painting became serial or suite-like in nature. The structure and content of these creations are dependent on the vibratory nature of light and sound with visually abstracted musical leitmotifs. The underlying focus is on the metaphysical and metaphorical relationships that I sense are present between color, light and sound. These similarities form my aesthetic language.

My subject matter draws on the symbolic and ephemeral nature of objects, places and personal insights. My artistic quest is that of a mystical aesthete, my intellectual curiosity about the nature of things is more that of an indiscreet gourmand.

My techniques is mixed medium based. I use natural untreated fabrics such as cotton, linen or papers. On these surfaces I apply, by brush and hand, multiple applications of colorfast solarized dyes, soft pastels, acrylic paints and color pencils. There are often as many as 80 individual applications of these mediums to the untreated natural surface of one work.

Over 800 of my unique paintings and designs are included in over 250 corporate, private and public collections throughout the world.

Ray Pierotti,

artist/composer

BRIEF CHRONOLOGY

- 1932-1963** Born in Bountiful, Utah and educated in the Davis County public schools, Pierotti evidenced, early in life, musical and visual artistic gifts. Following graduation from High School he entered the military and served two years in Korea and Japan. The experience informed his early artistic sensibilities. Following the service he moved to France where he served a 2 year mission for the LDS church and later worked at the American Library in Paris and completed his first undergraduate degree at La Sorbonne after which he returned to his native Utah and completed a BFA and MM at the University of Utah in musicology and music composition.
- 1963-1977** Moved to New York City where he supported his career as a painter by teaching at the **New York School of Visual Arts**, later as Assistant Director of the **American Craft Museum** and Director of national programs for the **American Craft Council**. Had his first solo exhibitions in New York's Sawdust Gallery followed by exhibitions at the South Carolina Museum of Art, the Hunter Museum of Art, the Fine Arts Museum at the University of Idaho plus inclusion in numerous group shows throughout the USA.
- 1977-1987** Accepted the directorship of **The Arrowmont School**, coupled with an associate professorship at the **University of Tennessee**, Knoxville. His exhibition schedule included the University of the South, Fairfax Art Academy, Morristown Art Center and numerous solo exhibitions in private galleries. Appointed as Chair of the Dept. of Fine and Performing Arts at **SCCC** he moved to Michigan. He was later invited to open up and direct the **Sawtooth School of Visual Arts** in Winston-Salem with solo exhibitions at the Southeastern Center for Contemporary Art, the Greenhill Center for the Arts along with additional solo and group exhibitions throughout the Southeastern US.
- 1987- 2014** Invited to re-open the **Hambidge Center for Creative Arts** in North Georgia and later asked to direct The **International Museum of Art & Design** (now called MODA), he moved his studio to Atlanta while working in North Georgia during the Spring and Summer months. He began painting in Shellman in the early 90s in the barn studio. His list of solo exhibitions in private galleries and museums along with corporate and public commissions has led to a successful career as an independent studio artist. With his life partner, Gene Lewis opened the **Center for Art and Rehabilitative Energies, Inc.** a 501 (c)(3) private foundation. Each year he leads 2-3 hands-on workshops in his unique artistic technique. He currently lives and works in Shellman. Completed 2 Art In Public Places Commission (NC & GA).
- 2015 -** Recent Solo exhibition at **Albany Museum of Art**, GA, "**Continuous Threads**" Bufford, GA, Included in "**Summer Sizzle**", AAAC, GA. Taught workshops: **Fiber Forum**, Arrowmont, Gattlinburg, TN, and at **IMWG**, Durango, CO. Awarded **1st** in GAGA Invitational '15 and **2nd** in Southeastern Regional '16. Curated 18 exhibitions (2012-16) for the Center for Art & Rehabilitative Energies, Inc. Completed public and private commissions in Shellman studio. He serves on the Albany Area Arts Council Board, on the Georgia Council for the Arts Grant Panel and The Surface Design International Grant's Panel.